



INDUSTRIA

L I N E A R H I G H - B A Y

CREE  **LIGHTING**





INDUSTRIA

ONE LUMINAIRE DIVERSE APPLICATIONS

INDUSTRIA is an all-new modular LED High-Bay system built for today's industrial environments.

The family responds to market demands with great attention: It comes in 3 sizes, 6 lumen packages, 4 light distributions, multiple colour temperatures and mounting kits making it suitable for thousands of possible configurations that can satisfy even the most demanding customers.

WAREHOUSE

INDUSTRY

FOOD PROCESSING

RETAIL

SPORTS

HIGH RACK OPTIC

Ta 50°C

GLASS-FREE

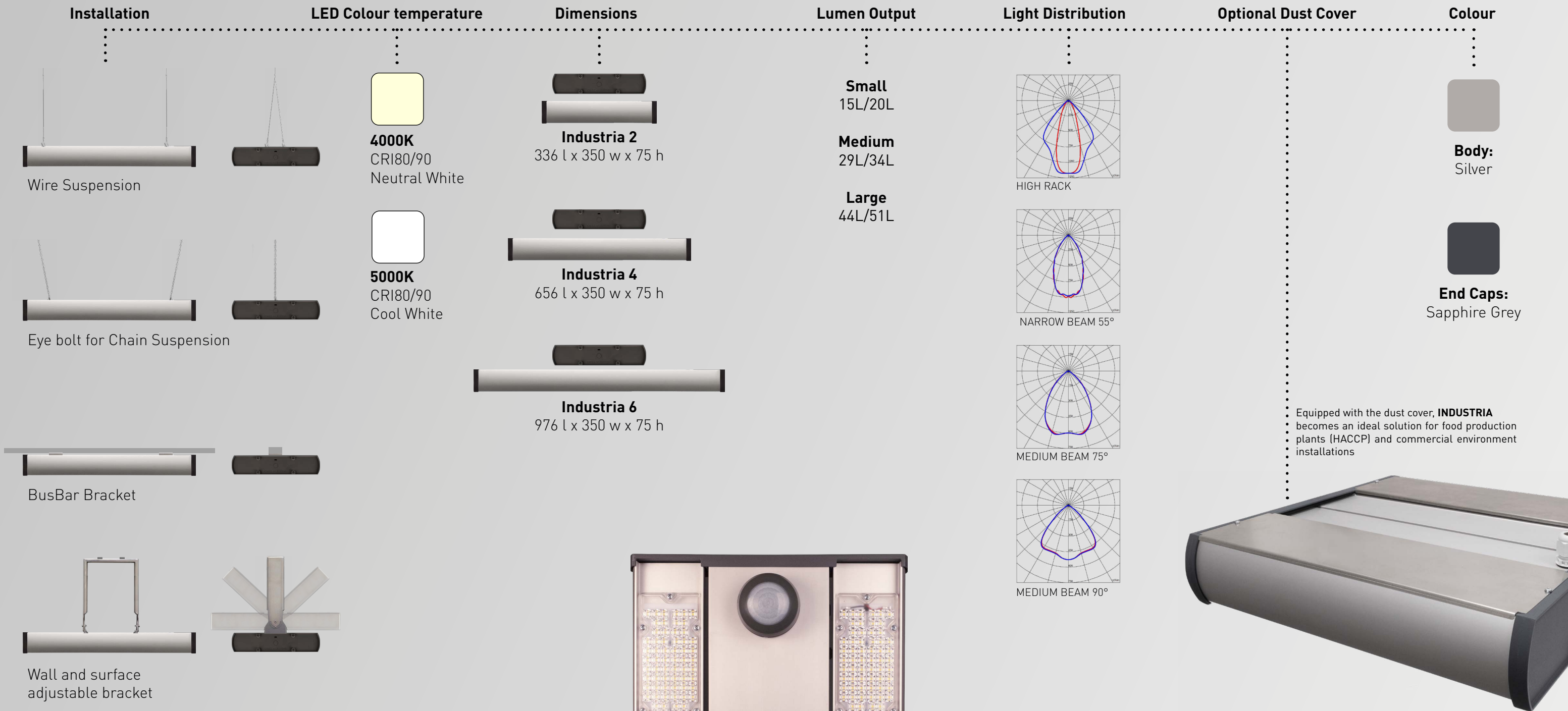
CRI 90

IK08

INDUSTRIA

A MODULAR TOOL KIT

With 2000+ possible configurations, INDUSTRIA 's modular design offers a toolkit of optics, mounting options, outputs and sizes for the industrial market and its diverse requirements.

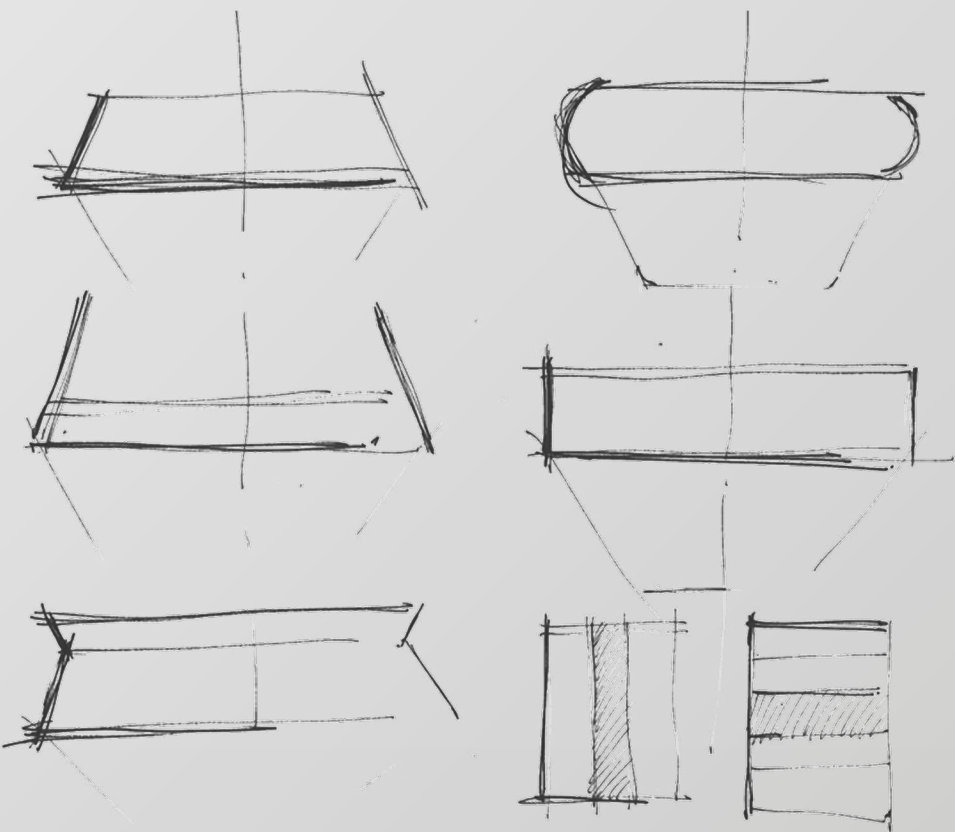


SUSTAINABILITY
THROUGH
MODULARITY

UPGRADE
REPLACE
RECYCLE

LIGHTING FOR INDUSTRY

Characterized by its innovative yet minimal aesthetic qualities, INDUSTRIA stands out for its essential overall design providing class-leading performance in terms of energy efficacy and optics.



Designed by F Mark

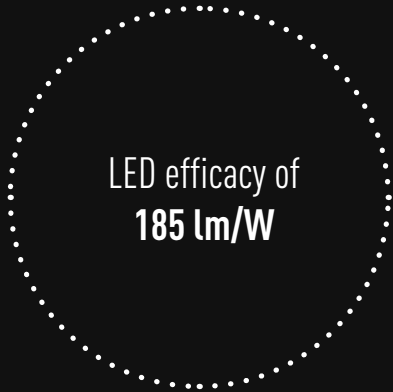
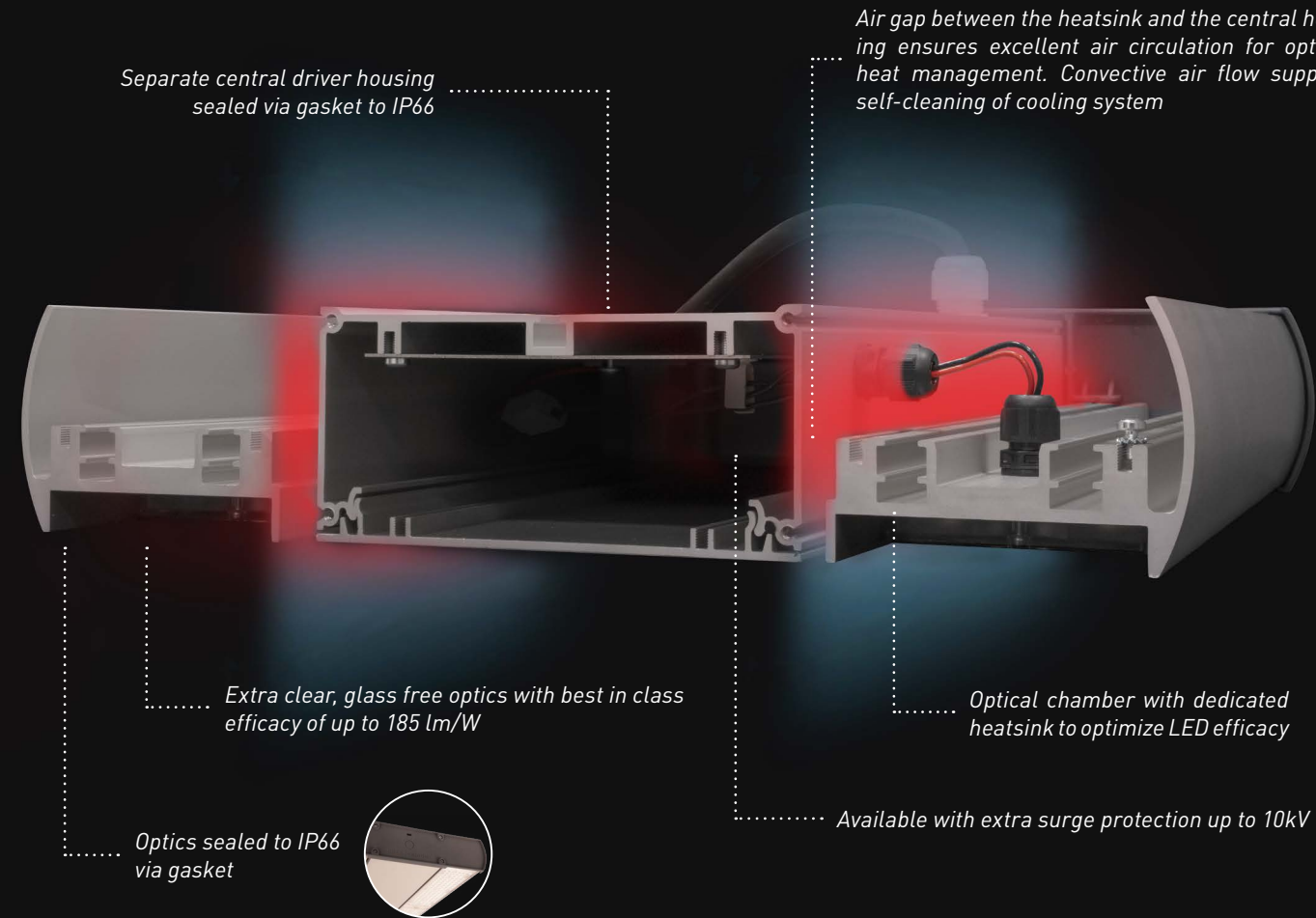
Developed in cooperation with London based product design agency F Mark, INDUSTRIA offers a high level of aesthetics whilst providing market leading performance.

FORM



FUNCTION

INDUSTRIA features a separate IP66 sealed driver and optical chamber, enabling airflow between components. This allows for market leading performance in lumen output and efficacy.



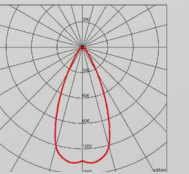
SMARTNESS FOR INDUSTRY

The INDUSTRIA product family is not only good looking, but smart, too. Smart sensors and emergency modules are easily configured with the luminaire, providing turnkey smart solutions for industry, warehousing, retail and many more applications.



EMERGENCY KIT

- IP66 emergency kit option
- Integrated or stand alone.
- 200 lm output
- 3 h emergency operation



SMARTEST SENSOR ON THE MARKET

- Continuous dimming feature
- Easy commissioning with Bluetooth Sensor Configuration App
- Recommended mounting height up to 12 m
- Motion detection within a 30 m diameter range at a mounting height of 12 m



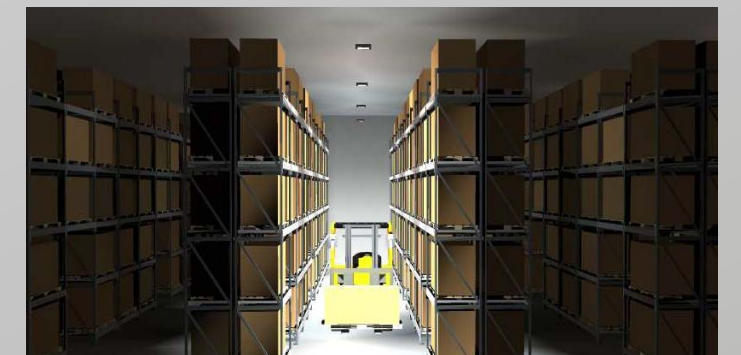
Additional 70%
energy saving potential

No system
commissioning fee

Ideal for
retrofit solutions

PROJECT SUMMARY

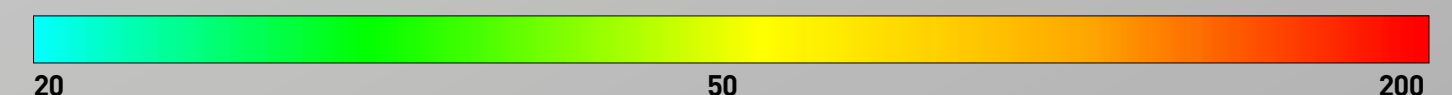
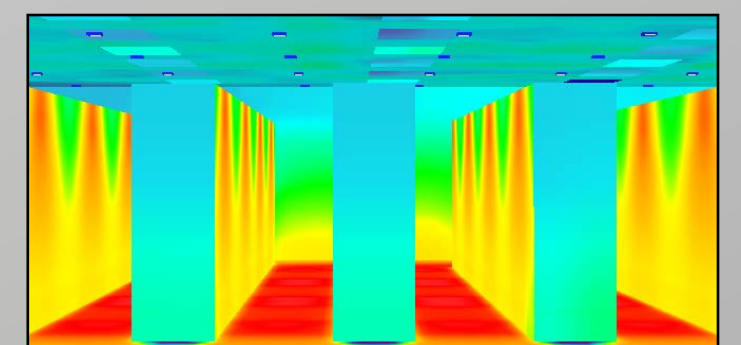
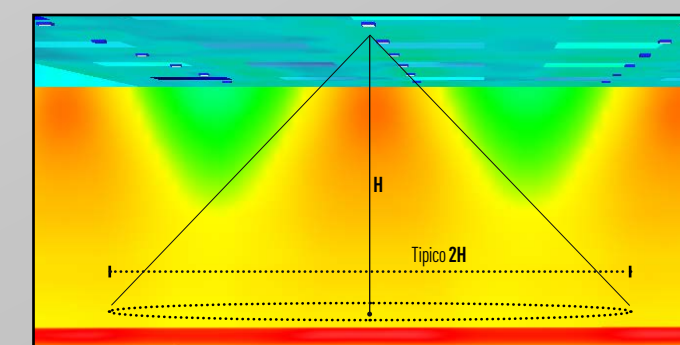
LUMINAIRE:	INDA - HR - 15L - 508
LUMAIRES PER CORRIDOR:	4
INDIVIDUAL SYSTEM WATT:	84 W
TOTAL SYSTEM WATT:	336 W
MOUNTING HEIGHT:	8,5 m
LUMINAIRE SPACING:	9,2 m
ILLUMINANCE LEVELS:	200 lux (floor) 75 lux (shelf)



HIGH RACK OPTIC

9,2 M SPACING BETWEEN LUMAIRES
REDUCTION OF LUMINAIRE COUNT BY 50%
SYSTEM ENERGY SAVING OF 50%
IMPROVED VISUAL COMFORT | UGR <22

*Please note that for this specific case study, INDUSTRIA's performance has been compared to industrial LED floodlights and not HID luminaires.



PRODUCT SUMMARY

FEATURES

- LED lumen output 14500-50200 lm
- LED module efficiency (excluding optical system): ≥ 194 lm/W
- Luminaire efficiency (including optical losses): up to 180 lm/W
- UGR Value: ≤ 22 per lens 75, 55 & HR, ≤ 25 per lens 90
- CCT: 4000K, 5000k Ra80 (Ra90 on request)
- Initial Chromatic Selection: ≤ 3-Step MacAdam ellipse
- Luminous flux maintenance factor: L90B10 > 50.000 hours Ta=25°C (According to IESNA TM-21)
- Insulation Class: I
- Degree of protection: IP65\IK08
- Overvoltage protection: up to 4kV according to EN61000-4-5 and EN 61547, 10kV version available via SPD
- Driver r equipped with over-temperature protection for optimal performance and safety
- Power factor: ≥ 0.98 at full load
- Operating temperature: -40°C up to +50°C
- Control Options: DALI 2.0, Full Programmable Ambient/Motion Sensor
- Stand-alone emergency light unit IP65 200 lm 3 hours available as accessory

CONSTRUCTION AND MATERIALS

- Extruded Anodized aluminium with die-cast Aluminium end caps
- Glass-free optical system
- Ultra-clear Replaceable high efficacy lens
- Replaceable LED board equipped with ESD protection
- Mounting Option: Eye Bolt, wire Suspension, Busbar, Adjustable brackets (surface and wall)
- Dust covers available as accessory
- Cable type H07RN-F (standard Cable length 2 m)
- Easy installation
- Practicality in ordinary and extraordinary maintenance
- Luminaire assembled without the use of adhesives, completely disassemblable and recyclable

WARRANTY AND CERTIFICATIONS

- Limited Warranty: 5 years
- CE / RoHs / CB / ENEC / RCM / D Mark / Ball Impact / HACCP
- Risk group exempt RG0 in accordance with Standard CEIEN62471 for photobiological safety (Tested IEC/TR62778)
- Compliant to: EN 60598-1; EN 60598-2-1; EN 60598-2-22 compliant
- Energy labels are available for download in the certifications section of the product page

ORDERING INFORMATION

Ordering information EX: INDА-N-55-15L-408-+-A-SG-FX-S-S-02 + IND-EY

INDA	- N	- 55	- 15L	- 408	- +	- A	- SG	- FX	- S	- S	- 02
Product	Mounting Options	Optic	Lumen Package	CCT	Insulation Class	Voltage	Finish	Option	Variant	Protection	Cable length
INDA INDUSTRIA Linear High Bay	N* NO MOUNT	55 NARROW BEAM 55D	15L SMALL 85W	308** 30K 80CRI	+ Class 1	A 220-240V	SG	FX FIXED OUTPUT	S NO SENSOR	S BY DRIVER	02 Exit cable 2 m
		75 MEDIUM BEAM 75D	20L SMALL 110W	408 40K 80CRI				DL DALI	M*** MOTION/ AMBIENT SENSOR	U 10 kV	
		90 WIDE BEAM 90D	29L MEDIUM 165W	409** 40K 90CRI							
		HR HIGH RACK 30X70D	34L MEDIUM 200W	508 50K 80CRI							
			44L LARGE 250W	509** 50K 90CRI							
			51L LARGE 290W								

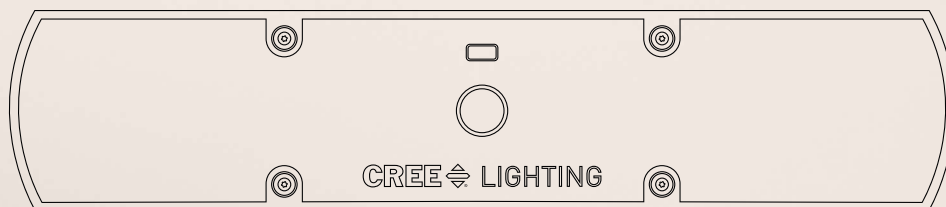
*To be selected from those available in the table MOUNTING OPTIONS
** On request
***Must be ordered with DL option

MOUNTING OPTIONS	
Standard Mounting (2 pieces)	IND-EY
Busbar*	IND-BB
Wire Suspension*	IND-SP
Wall and surface adjustable bracket	IND-WB

ACCESSORIES	
Dust Cover 15L-20L	IND-DC-S
Dust Cover 29L-34L	IND-DC-M
Dust Cover 44L-51L	IND-DC-L
Safety Rope 1,5 m	IND-SR

EMERGENCY KIT	
Emergency kit - 200 lm 3 hrs	IND-EM
Emergency Mounting Bracket Kit for INDUSTRIA	IND-EM-BR

*To be ordered together to complete assembly



INDUSTRIA

L I N E A R H I G H - B A Y

CREE  **LIGHTING**

© 2022 Cree Lighting Europe S.p.A. All rights reserved.
For informational purposes only. Content is subject to change. Patents : www.creelighting.com/patents
Cree® and the Cree Lighting® logo are registered trademarks and the Cree SmartCast Technology® Logo is a trademark of Cree, Inc.