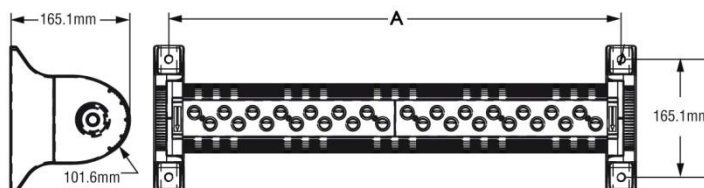


Last update: 27/06/12

Cree OL Series



Code	Light bars	Number of LED	System Power W			"A"
			@350mA	@525mA	@700mA (Standard Version)	
OLX##201D*	2x7	14	19	25	37	610 mm
OLX##202D*	2x14	28	35	50	66	610 mm
OLX##402D*	4x7	28	35	50	66	1210 mm
OLX##405D*	4x14	56	64	94	126	1210 mm
OLX##805D*	8x7	56	64	94	126	2430 mm
OLX##811D*	8x14	112	126	187	251	2430 mm

For information on luminous flux for each current please see the photometric user guide on our webpage.

LED light with slim low profile design. Provides high-performance interior and exterior illumination for a wide variety of architectural accent applications including façade, sign and wall wash lighting. Luminaire is constructed from rugged extruded aluminum housing and die cast end caps for superior heat dissipation and durability. Integral weather-tight LED driver compartment and high performance aluminum heatsinks. Rugged die cast mounting pads provide for solid and secure luminaire mounting. Optional field installable extruded aluminum arms to space luminaire away from the mounting surface. Luminaire body is rotatable 360 degrees in 5 degree increments for proper aiming and uniform illumination. Rotation is clearly marked with index marks on end caps.

LED LightBar modules made of 7 or 14 LEDs, for powers varying between 14 and 112 LEDs. 4000K Color temperature ($\pm 100K$), CRI ≥ 80 Available also in 5700K ($\pm 500K$) and 3500K ($\pm 100K$) Color Temperature LED.

The fixtures is equipped with high brightness LED (lumen output $> 130lmW$) tested, with every single optic type, according to the CEI EN 62471 standard for photobiological safety of lamps and lamp systems.

Main dissipation body in extruded aluminum with an integrated printed gasket designed around the geometry of the lenses to guarantee an IP66 degree of protection. High-performance and precision lenses made of Ruud NanoOptic® patented technology. Photometric performance and curves selectable for any application requested. Internal high-performance and reliability electronic constant current driver, tapped on 700mA driving current (as standard version), available also with driving current at 525mA, 350mA.

5 years Limited warranty on LEDs and drivers. Insulation Class I. Cos $\phi > 0,9$ and THD $< 20\%$ at full load. Degree of Protection IP66. Compliant with: EN 60598-1; EN 60598-2-3. Rated Voltage: 220 - 240Vac 50÷ 60Hz. Units provided with integral 10V surge protection.

Available options	Description	Available up to	Notes
D	Dimmable driver 1-10V with external controller	112 LED	
I3	LED current 350mA	112 LED	
I5	LED current 525mA	112 LED	
See Control Systems spec sheets on our webpage.			

Option D: 0 – 10V Dimming Option – 700mA

0 – 10V	Current (mA)	System Watts Multiplier	Lumen Multiplier
≤ 1.2	75	0.12	0.22
1.8	125	0.19	0.30
2.0	150	0.22	0.33
2.3	175	0.26	0.36
2.8	225	0.33	0.44
3.3	275	0.40	0.50
3.8	325	0.47	0.56
4.0	350	0.50	0.60
4.8	425	0.60	0.69
5.3	475	0.68	0.75
5.7	525	0.75	0.81
6.0	550	0.78	0.84
6.3	575	0.82	0.87
6.7	625	0.89	0.92
≥ 7.5	700	1.00	1.00

NOTE: Multipliers are for estimating purposes only.
Check actual spec sheet data where available.

Mod. OL 4x14 (56 LED)				
Driver current	25K hr LMF*	50K hr LMF*	100K hr LMF*	L ₇₀ Life* (hours)
350 mA	0,96	0,91	0,82	>150.000
525 mA	0,95	0,90	0,79	144.000
700 mA (standard)	0,94	0,88	0,75	122.000
* Based on fixture operating at 25° C.				

Accessories:

- XA-XFR9##: extension arm 229mm
- XA-XFR12##: extension arm 305mm
- XA-XFR18##: extension arm 457mm

Colors:

Standard Finish



Silver

Black

White

Bronze

Silver
Bronze

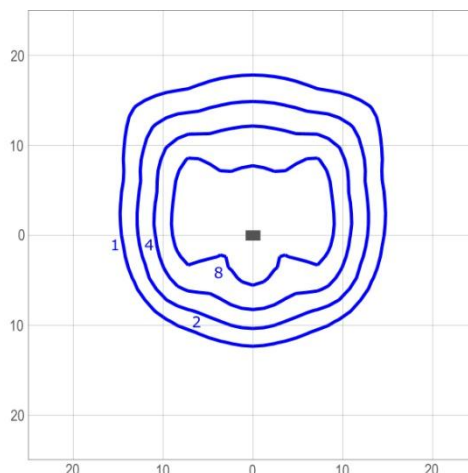
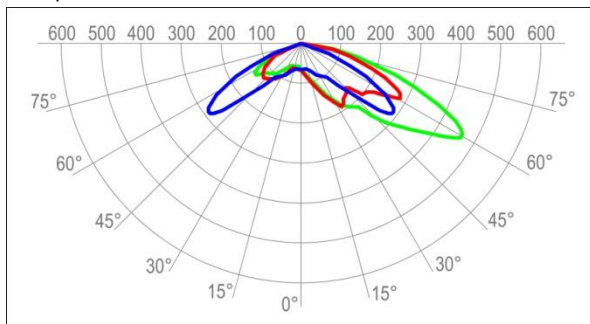


ECO LIGHT

Photometric Diagram

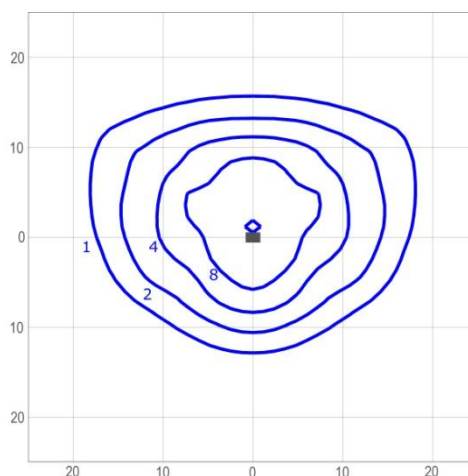
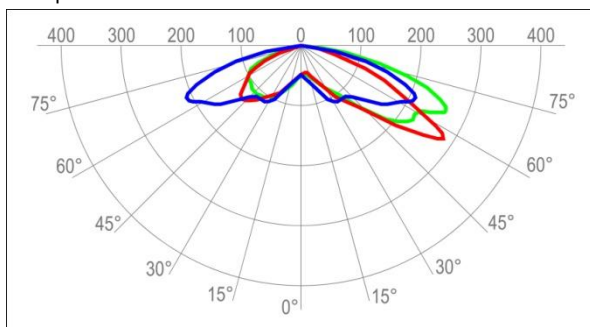
The following Photometric diagram are expressed in cd/kLm, are referred to photometric relief performed by independent labs.

AC Optic



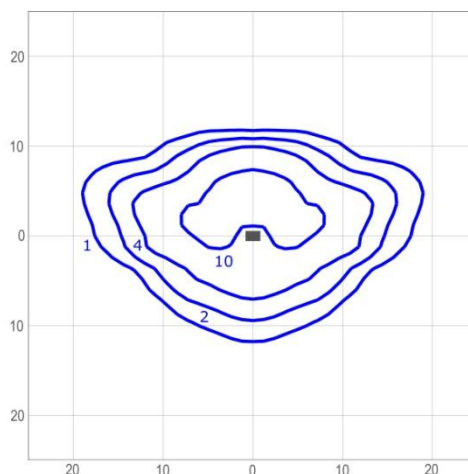
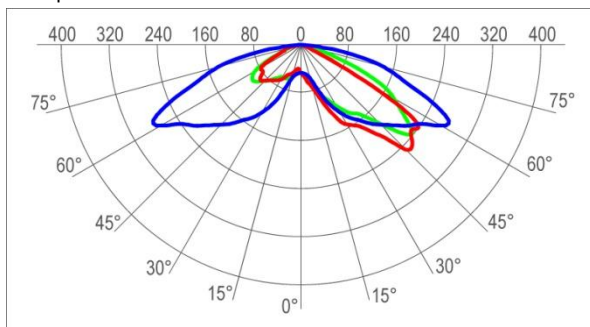
28 LED @700mA 6 mt. height isolux diagram

PR Optic



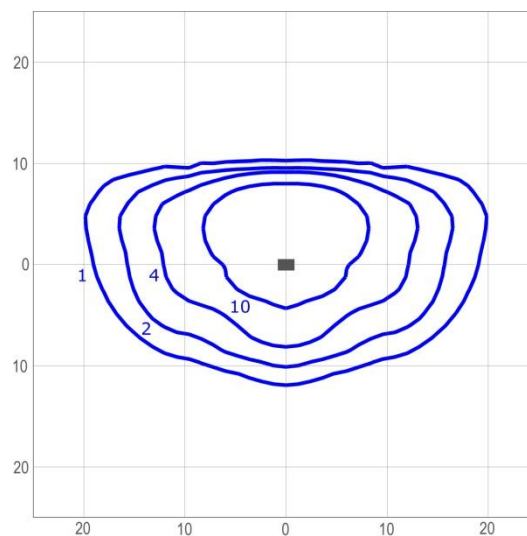
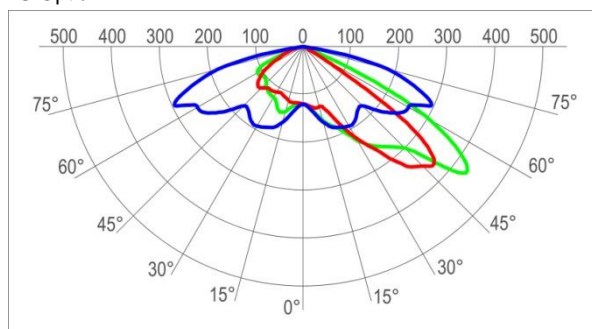
28 LED @700mA 6 mt. height isolux diagram

TM Optic



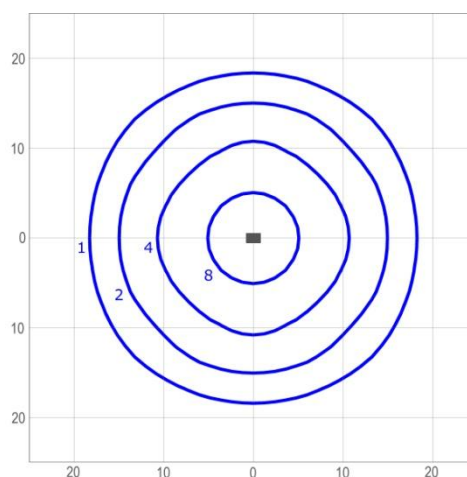
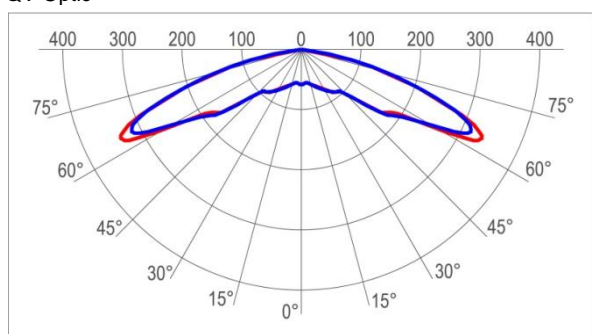
28 LED @700mA 6 mt. height isolux diagram

TS Optic



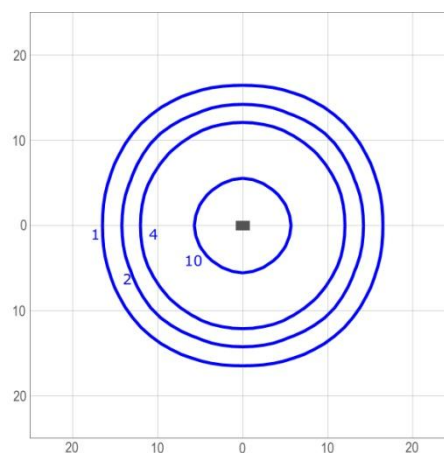
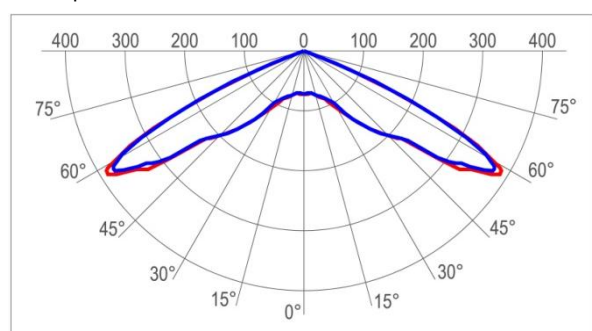
28 LED @700mA 6 mt. height isolux diagram

QV Optic



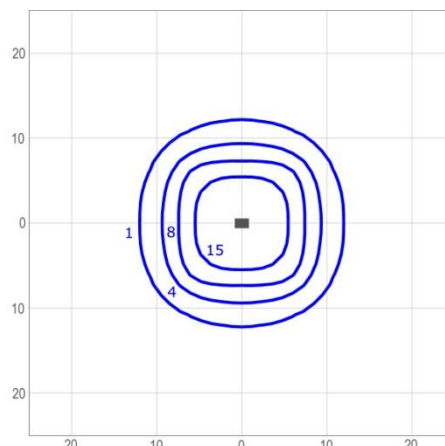
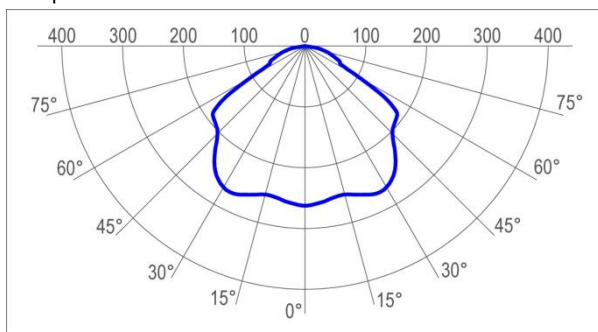
28 LED @700mA 6 mt. height isolux diagram

QVS Optic



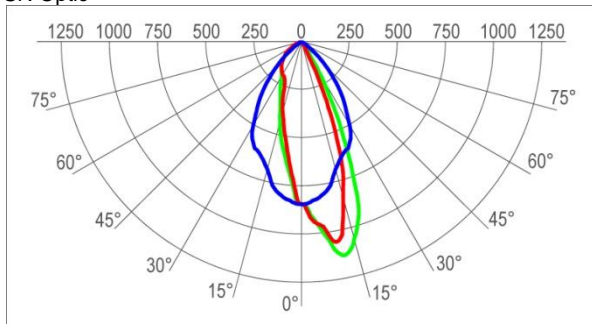
28 LED @700mA 6 mt. height isolux diagram

SL Optic

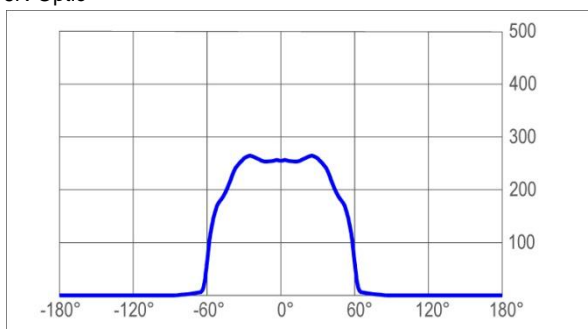


28 LED @700mA 6 mt. height isolux diagram

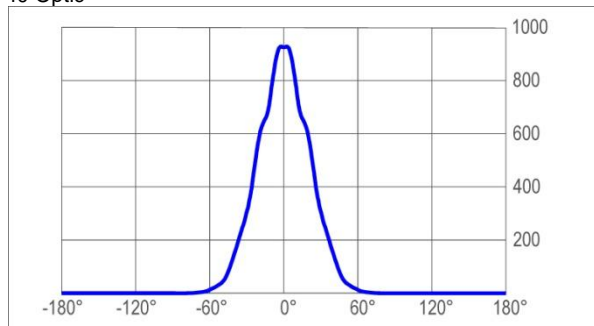
SN Optic



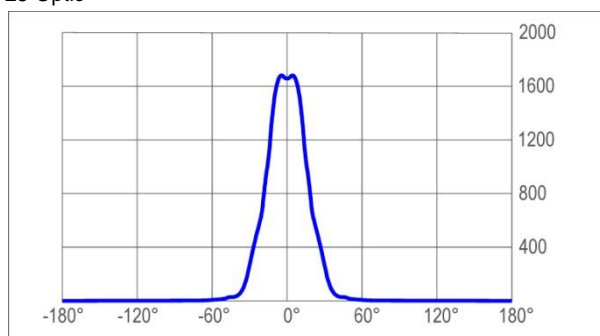
6N Optic



40 Optic



25 Optic



15 Optic

